

SBC

Surgical Bi-Storage Cabinet

Bi-Storage cabinets store in two ways: 1. in drawers 2. on shelves behind glass doors.

Designed for surgeries, labs.

Smooth, sterilizable interior.

Stainless, inert, nonabsorbent.

Many widths, heights & depths.

Simple to plan, Install, adapt.



CARR

SBC Features

DRAWERS have smooth interiors and glide easily on ball bearing slides. 150 Lb capacity.



LOCKS can be added and be all keyed alike or different. Locks can be changed quickly. Drawer lock is option DWRLOK. Door lock is option DORLOK.



CARR CORPORATION
carrcorp@aol.com - 800 952 2398
carrcorporation.com - 1/19 - Page 2

SBC Features

FULL HEIGHT PIANO HINGES
for lifetime, effortless operation.

ROUNDED WINDOW CORNERS
allow more thorough cleaning.

REINFORCED CABINET FACE
for added strength and durability.

WELDED CONSTRUCTION
for durability, smooth corners.



TEMPERED SAFETY GLASS
is double strength, 1/4" thick.

SOLID STAINLESS HANDLES
easy to grip and clean thoroughly.

ROLLER DOOR CATCHES
for smooth positive closing action.



CARR CORPORATION
carrcorp@aol.com - 800 952 2398
carrcorporation.com - 1/19 - Page 3

SBC Features

REINFORCED SHELVES height adjustable in 1/2" increments. 80" High cabinet has 3 shelves. 72" High cabinet has 2 shelves. 60" High cabinet has 1 shelf. Additional shelves are optional.

EASY TO STERILIZE smooth interior. Shelf ladders are flush perforations in the cabinet wall.

FOR CONTROLLED ENVIRONS. Stainless steel is strong, inert, highly chemical resistant, non-absorbent with an integral finish that does not chip or flake.

PLANET FRIENDLY. Stainless steel is 100% recyclable and made from 85% recycled material. Plastic and wood used in other casework use up precious natural resources.

CARR CORPORATION
carrcorp@aol.com - 800 952 2398
carrcorporation.com - 1/19 - Page 4



SBC Features

FULL PROTECTION CRATES are carefully designed, built and insulated to insure undamaged freight delivery to job site.



SIMPLE TO PLAN, INSTALL. Government preapproved seismic calculations, CAD and submittal drawings ready to use. Step by step illustrated installation manual. Mounting holes provided, no drilling needed. Cabinet connectors insure precise alignment on multiple cabinets.



CARR CORPORATION
carrcorp@aol.com - 800 952 2398
carrcorporation.com - 1/19 - Page 5

SBC Surface Cabinet Sizes, Model Numbers

SLOPED TOP
 Model ST width height depth
 Example: ST48924

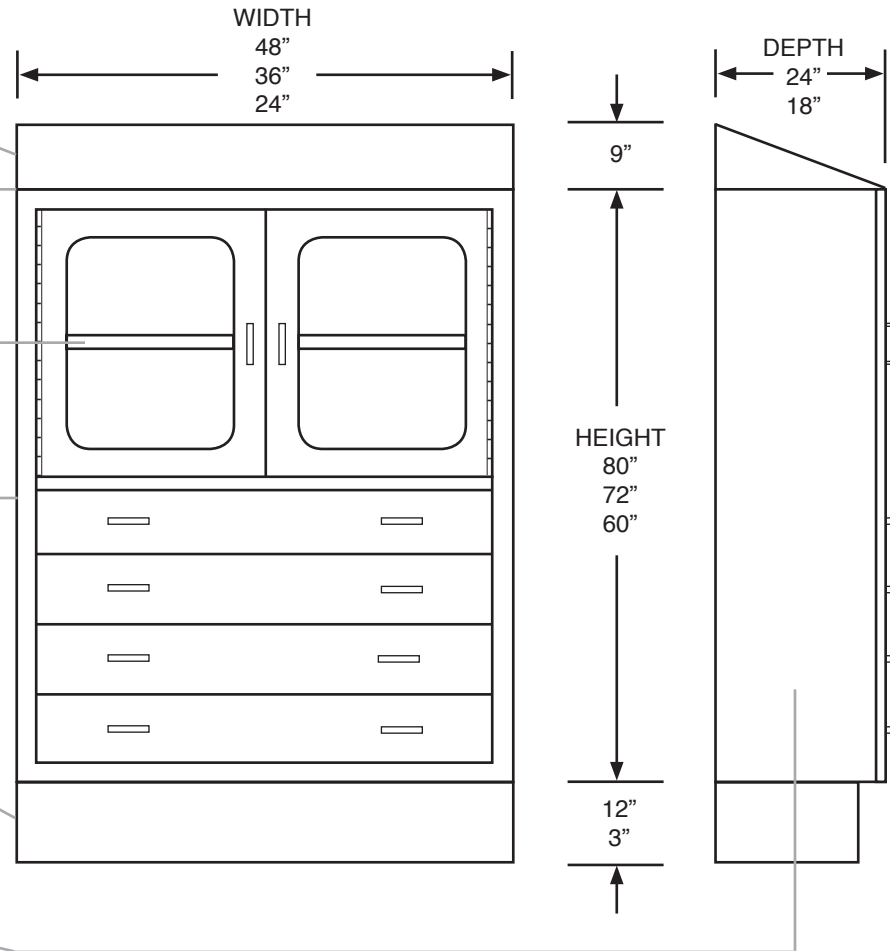
FLAT TOP
 Model FT width depth
 Example: FT4824

SHELVES, ADDITIONAL
 Model SH width depth
 Example: SH4824

CABINET
 Model SBC width height depth
 Example: SBC486024

BASE
 60" High cabinets get a 12" high base, all others a 3" high base.
 Model BS width, height depth
 Example: BS481224

SIDE PANELS
 Cosmetic panels for sides.
 Model SP height depth
 Example: SP6024

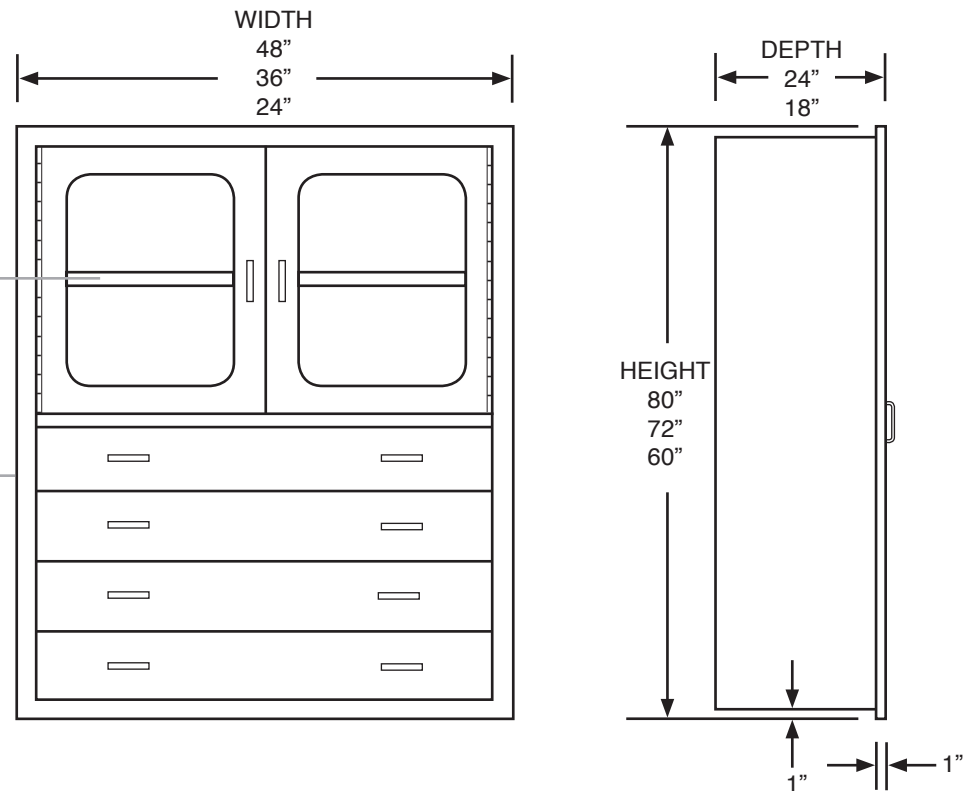


24" WIDE CABINETS HAVE ONE DOOR, HINGED RIGHT

SBC Recess Cabinet Sizes, Model Numbers

SHELVES, ADDITIONAL
Model SH width depth
Example: SH4824

CABINET
Model SBC width height depth
Example: SBC486024



24" WIDE CABINETS HAVE ONE DOOR, HINGED RIGHT

SBC Information

INSTALLATION

INSTALLATION PREPARATION

Anchorage holes provided, no drilling required. Available cabinet connectors assure rapid, accurate alignment of multiple units. Complete installation manual included with each cabinet.

INSTALLATION ACCESSORIES:

CC60 Cabinet connector, 60”H
CC72 Cabinet connector, 72”H
CC80 Cabinet connector, 80”H

SPECIFICATIONS

DESIGN: Designed to the specifications set forth by Milspec, OSHPOD, ANSI / BHAMA, ASTM.

CONSTRUCTION: Heavy gauge 304 stainless steel formed and welded modular type assembly.

FINISH: No.4 stainless steel finish. All welds ground, polished.

HINGES: Full height stainless piano hinge, .170” thick, pin diameter .100”, self lubricating.

HANDLES: Solid stainless steel open design on 4.00” centers.

DOOR CATCHES: Two .250” diameter nylon rollers fit into plated spring steel receptacles.

DRAWER SLIDES: Ball bearing, full extension, 250 lbs capacity.

GLASS: Tempered double strength safety glass, .250” thick.

SHELVES: Reinforced for strength on all four sides. Height adjustable in .500” increments on flush, built-in ladders.

MISCELLANEOUS NOTES

LOCK KEYING: Locks are normally keyed alike. Can be keyed differently on request.

SHIPPING: Surface cabinets have outer top, side panels and base shipped separately and assembled in the field to reduce risk of freight damage. On request, cabinets can be shipped with components assembled.

COUNTRY OF ORIGIN: All cabinets are designed and manufactured entirely in the USA.

SEISMIC CALCULATIONS: Complete seismic calculations including OSHPOD preapprovals are available on request.

CAD DRAWINGS: Available on request, Carr document 1255.

ORDINARY USE: Cabinets are not designed for outdoor use.

PRODUCTION SCHEDULING: Place your order as early as possible in your construction project to insure production and delivery on site at the time needed.

SBC

Carr Corporation

BACKGROUND INFORMATION

Carr Corporation was established in 1946 to build the finest quality medical equipment. Based in Santa Monica California, it has prominent installations on all continents, including Antarctica. It's innovative imaging systems were even selected for the SR-71 and Apollo moon landing programs. Our philosophy: "The greatest sophistication is simplicity" - *Leonardo Da Vinci*.

ADDRESS

Carr Corporation
1547 11th Street,
Santa Monica, CA, USA 90401

CARR CORPORATION

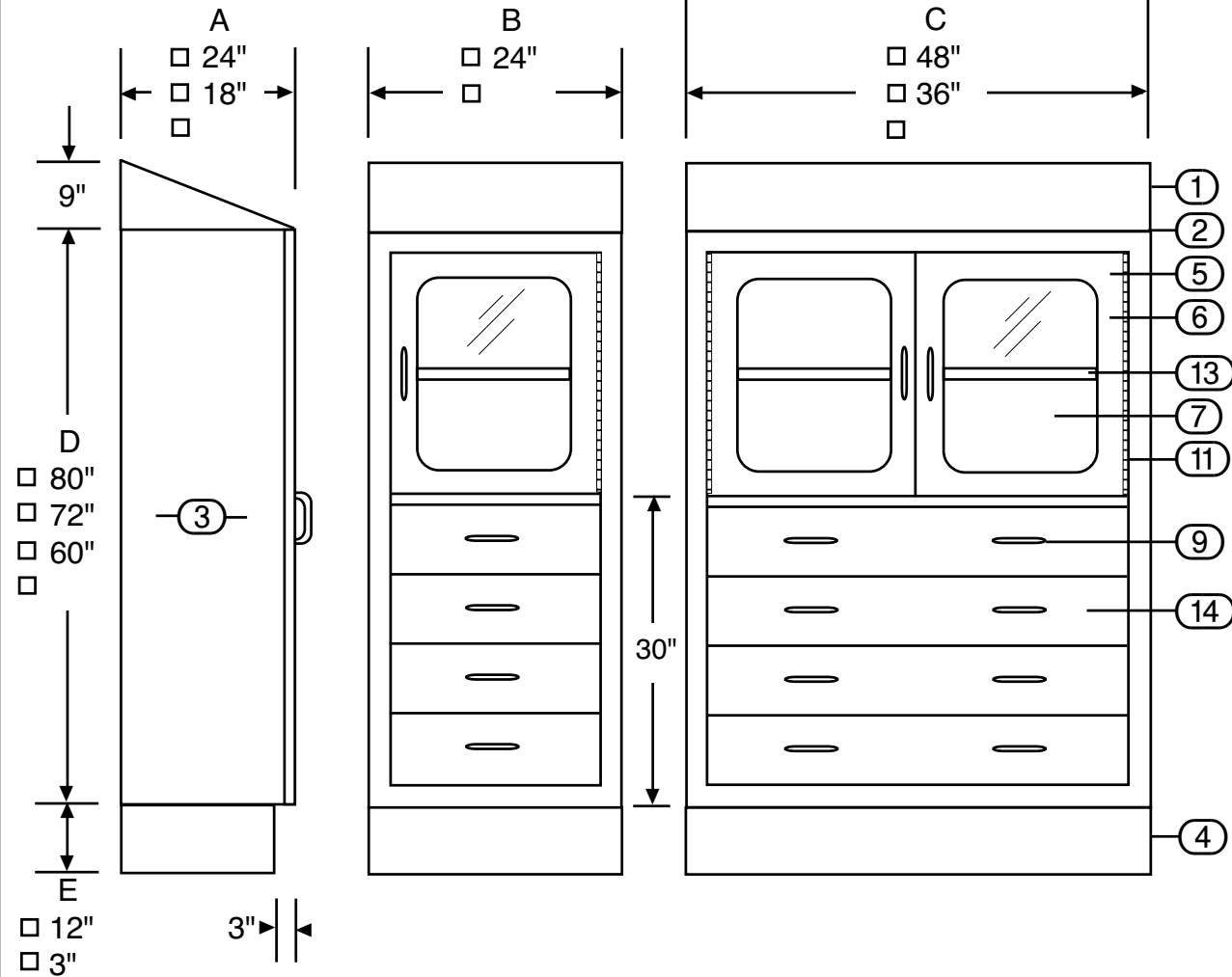
carrcorp@aol.com - 800 952 2398

carrcorporation.com - 1/19 - Page 9



**SURGICAL BI-STORAGE
CABINET, SURFACE MOUNTED
MODEL SBC**

DATE: 12/20/16 SCALE: NOT TO SCALE
DRAWN BY: *jjr* DRAWING NO. 378



- 1. SLOPED TOP, SS.
- 2. FLAT TOP, SS.
- 3. SIDE PANEL, SS. QTY ____.
- 4. BASE, SS.
- 5. DOOR, SOLID SS, DOUBLE WALL, SOUND INSULATED.
- 6. DOOR, SINGLE GLAZED, DOUBLE WALL, 2" WIDE FRAME, SS.
- 7. GLASS, DBL STRENGTH, TEMPERED, 1/4" THICK, REMOVABLE.
- 8. STAINLESS, TYPE 304, #4 FINISH.
- 9. HANDLE, SOLID STAINLESS.
- 10. FLUSH INTERIOR FACILITATING THOROUGH CLEANING.
- 11. PIANO HINGE, FULL HEIGHT, SS.
- 12. NYLON ROLLER DOOR CATCH, SPRING LOADED, NOT SHOWN.
- 13. SHELF, HEIGHT ADJUSTABLE IN 1/2" INCREMENTS, SS.
80" HIGH CABINET 3 SHELVES.
72" HIGH CABINET 2 SHELVES
60" HIGH CABINET 1 SHELVES.
SHELF QUANTITY ____.
- 14. DRAWER, SS, WITH SOLID DOOR, BALL BEARING DRAWER SLIDES.

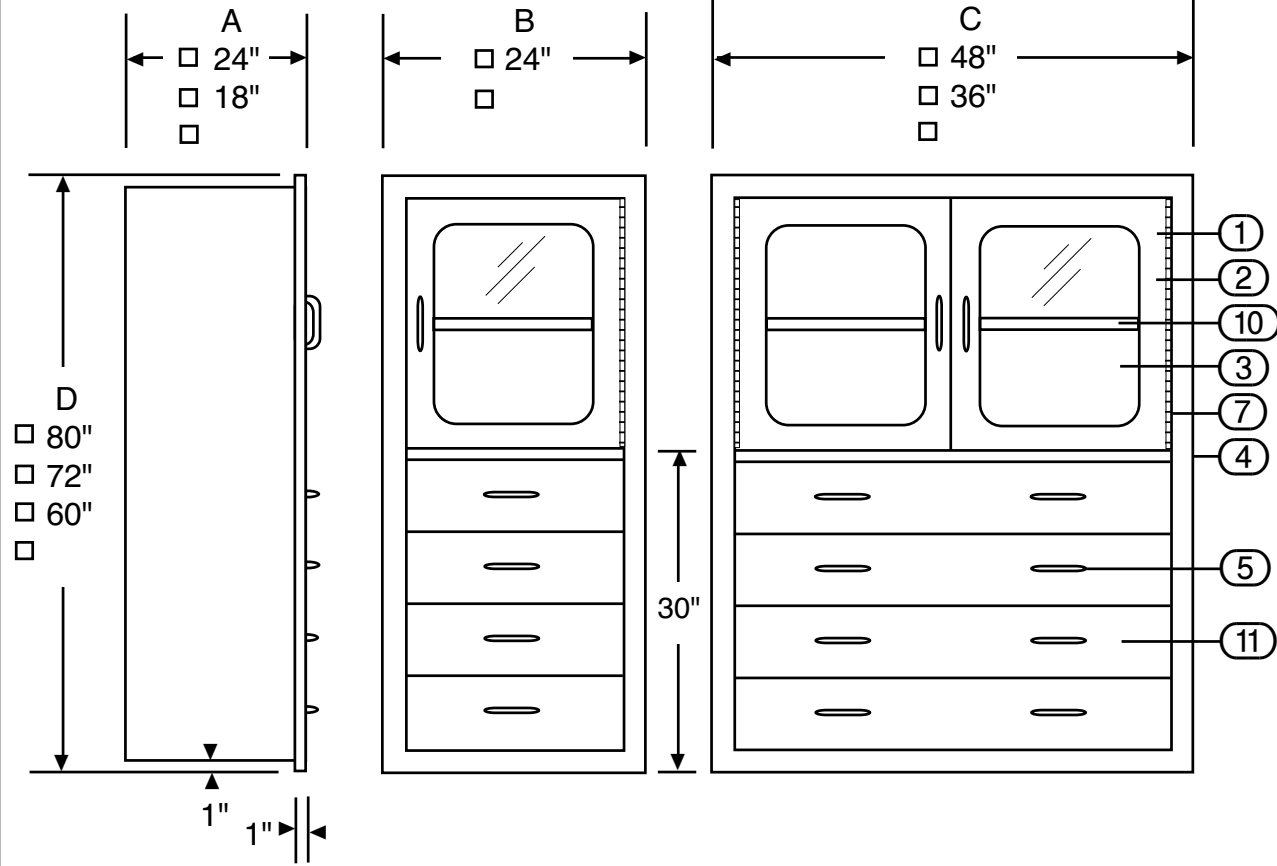
NOTE: ONLY ITEMS WITH MARKED BOXES ARE INCLUDED.

ALL DIMENSIONS +- 1/8".

CARR

**SURGICAL BI-STORAGE
CABINET, RECESS MOUNTED
MODEL SBC**

DATE: 12/20/16 SCALE: NOT TO SCALE
DRAWN BY: *jjr* DRAWING NO. 377



- 1. DOOR, SOLID SS, DOUBLE WALL, SOUND INSULATED.
- 2. DOOR, SINGLE GLAZED, DOUBLE WALL, 2" WIDE FRAME, SS.
- 3. GLASS, DBL STRENGTH, TEMPERED, 1/4" THICK, REMOVABLE.
- 4. STAINLESS, TYPE 304, # 4 FINISH.
- 5. HANDLE, SOLID STAINLESS.
- 6. FLUSH INTERIOR FACILITATING THOROUGH CLEANING.
- 7. PIANO HINGE, FULL HEIGHT, SS.
- 8. NYLON ROLLER DOOR CATCH, SPRING LOADED, NOT SHOWN.
- 9. RECESS FLANGE.
- 10. SHELF, HEIGHT ADJUSTABLE IN 1/2" INCREMENTS, SS.
80" HIGH CABINET 3 SHELVES.
72" HIGH CABINET 2 SHELVES.
60" HIGH CABINET 1 SHELF.
SHELF QUANTITY ____.
- 11. DRAWER, SS, WITH SOLID DOOR, BALL BEARING DRAWER SLIDES.

NOTE: ONLY ITEMS WITH MARKED BOXES ARE INCLUDED.

ALL DIMENSIONS +- 1/8".

WALL OPENING:
WIDTH: TOTAL OF "B" OR "C"-1 1/2".
HEIGHT: "D" - 1 1/2".
DEPTH: "A" - 3/4".

CARR



Carr Surgical Cabinets - Installation, Operation And Maintenance

Page 1 Installation Preparation

Page 2 Recess Mounted Cabinet Installation

Page 3 Surface Mounted Cabinet Installation

Page 4 Pass Through Cabinet Installation

Page 5 Operation And Maintenance

Manual Number 338, Revised 1/13

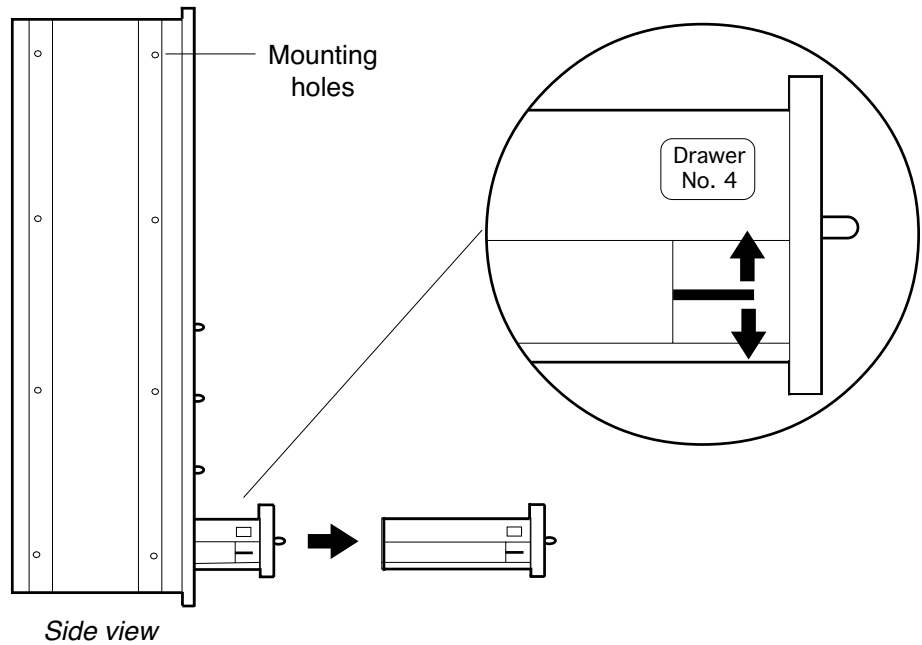
Carr Surgical Cabinets - Installation Preparation

Manual No. 338 Revised 1/13

Remove drawers to access mounting holes.

If cabinet has drawers, remove them to access mounting holes. Toggle latches to release.

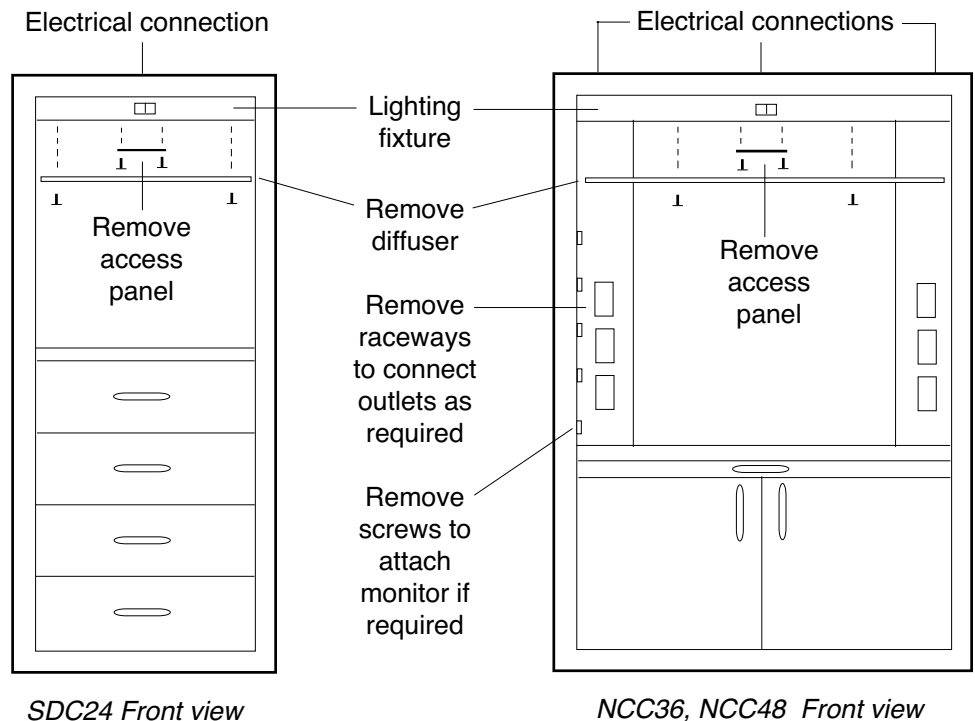
For correct alignment, replace drawers to their original position by matching the number on the inside of the cabinet to the number on side of drawer.



Make electrical connections:

Some cabinets require electrical connections. Do so in conformance with local codes using a qualified electrician.

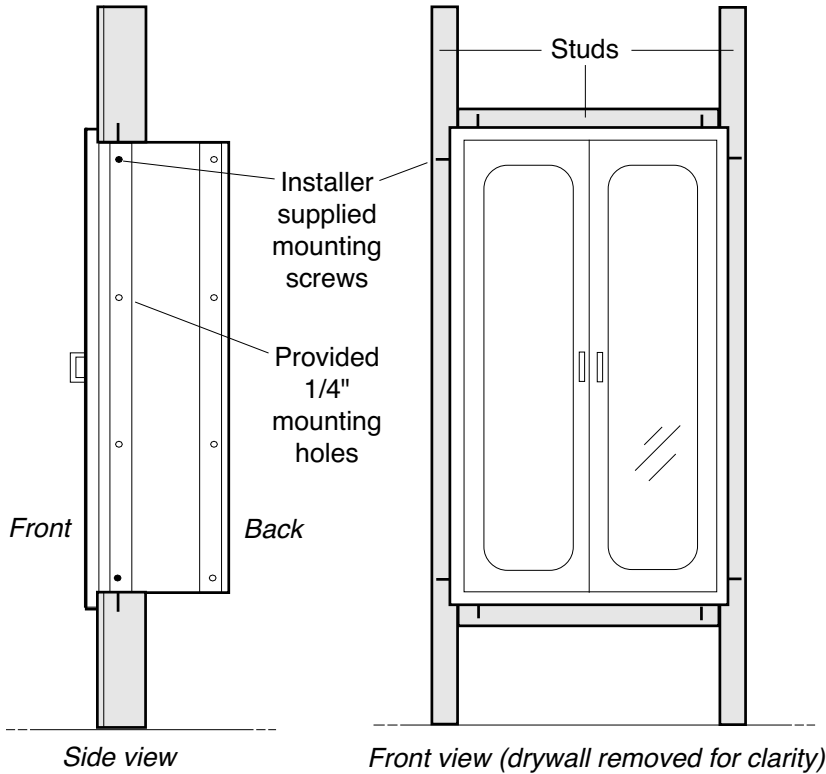
Route power and ground wires to cabinet. Make final connections by removing access panels.



Carr Surgical Cabinets - Recess Mounted Cabinet Installation

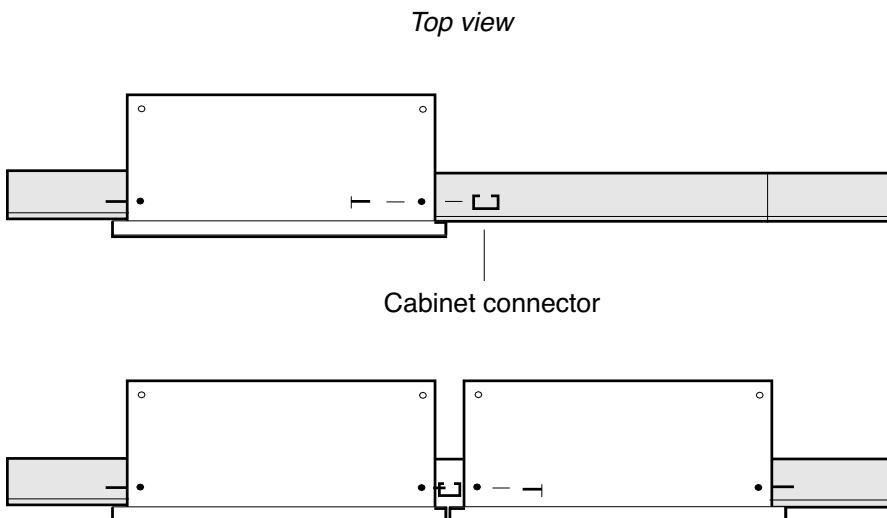
Manual No. 338 Revised 1/13

Cut wall opening, place cabinet and secure:



1. Check local codes. Seismic calculations available.
2. 1/4" Mounting holes provided. Mounting screws not supplied. Use screws suitable for wall material. All other screws, nuts provided.
3. Wall opening width is the front width of the cabinet(s), less 1 1/2".
4. Wall opening height is cabinet front height less 1 1/2".
5. Wall opening depth is cabinet side less 3/4"
6. Cut wall opening. Frame with stud material. Make sure cabinet mounting holes align with studs as shown. Check opening is square.
7. Slide cabinet into wall. Do not lift by door handles.
8. Install mounting screws into provided holes. Do not over torque and damage cabinet. Hand torque only.
9. If multiple cabinet installation, attach cabinet connector. Slide additional cabinet(s) into wall and secure screws to cabinet connector and mounting holes.
10. Check cabinet(s) are installed square to insure proper door movement. Shim as needed.

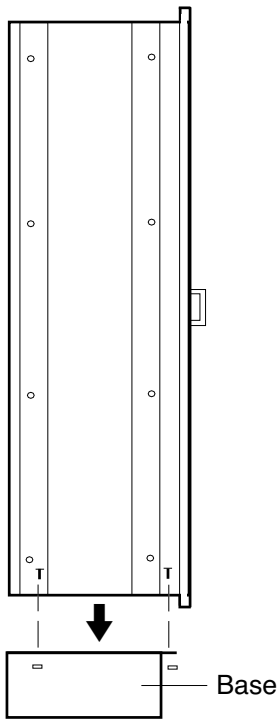
For multiple cabinet installation:



Carr Surgical Cabinets - Surface Mounted Cabinet Installation

Manual No. 338 Revised 1/13

1. Secure base:

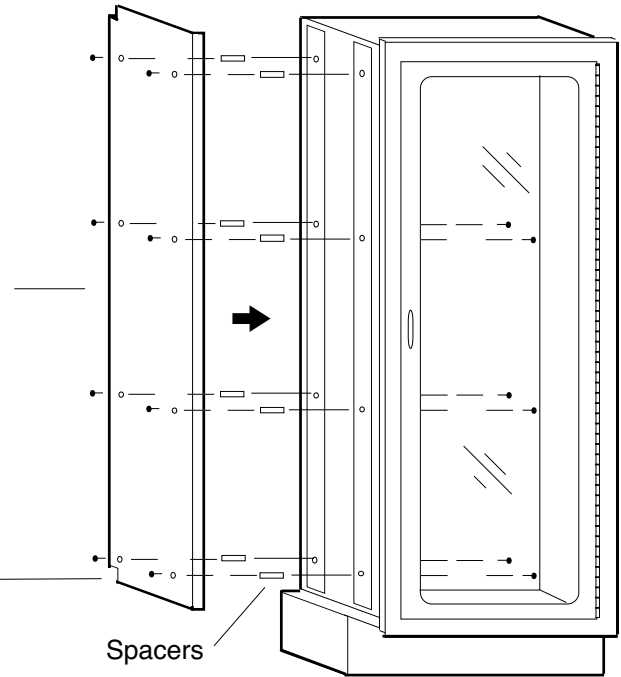


2. Secure side panels as required:

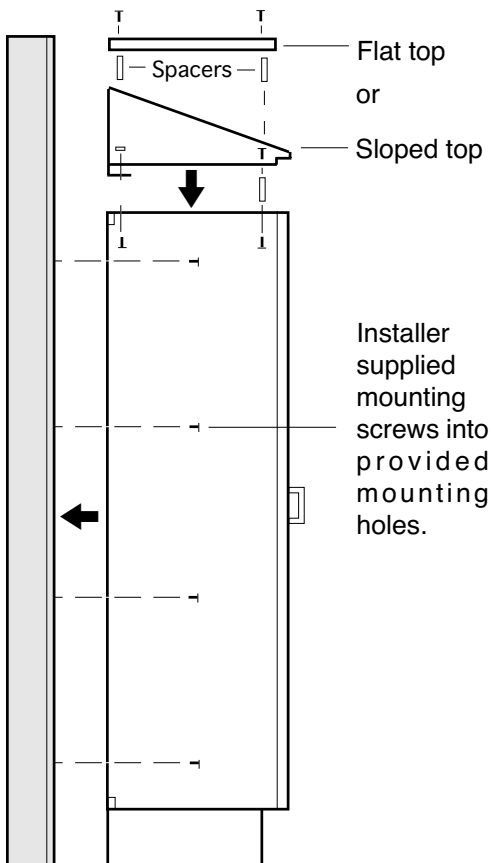
Place side panel with spacers on exposed side of cabinet and loosely attach inside screws. Perfect alignment, eliminating any gaps and tighten inside screws. Side panels not required between cabinets.

Notches in back

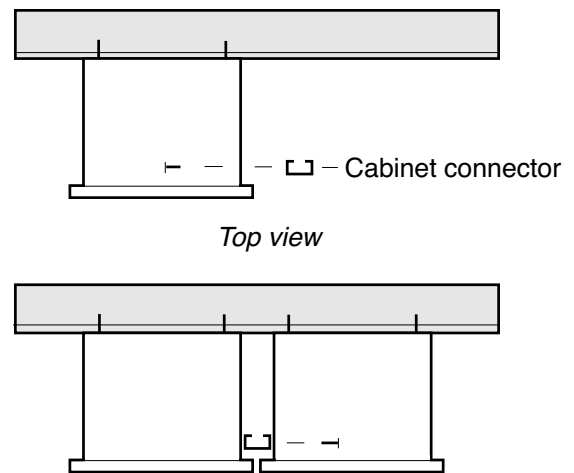
Spacers



3. Secure top, then bolt cabinet to wall:



For multiple cabinet installation:

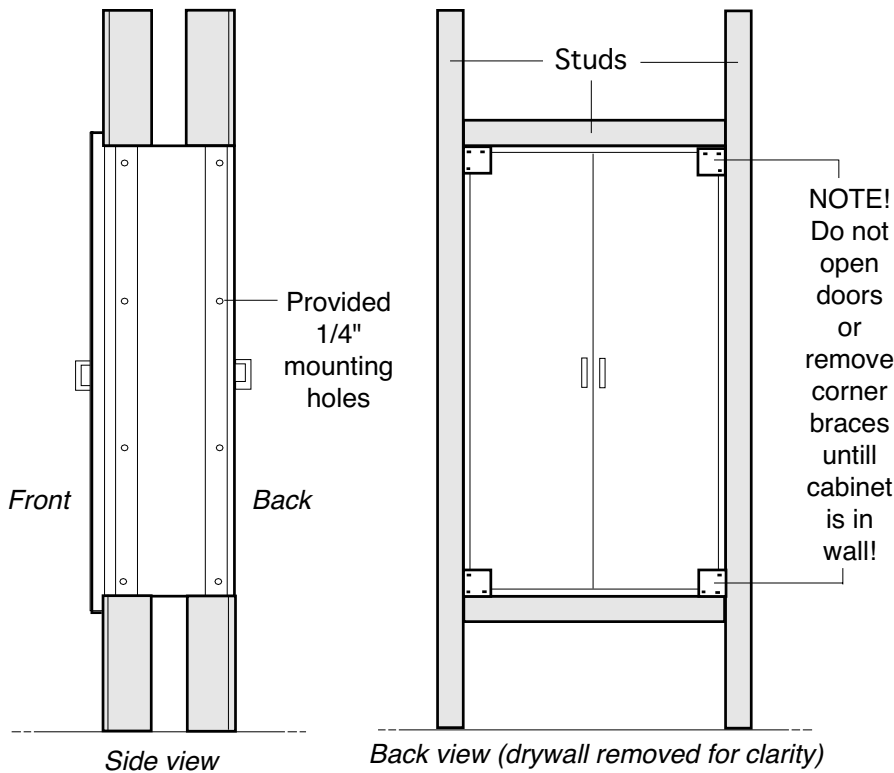


1. Check local codes. Seismic calculations available.
2. 1/4" Mounting holes provided. Mounting screws not supplied, use screws suitable for wall material. All other screws and nuts provided.
3. Do not lift cabinet by door handles.
4. Be sure cabinet is installed square to insure proper door movement.
5. Do not over torque mounting screws and damage cabinet. Hand torque only.

Carr Surgical Cabinets - Pass Through Cabinet Installation

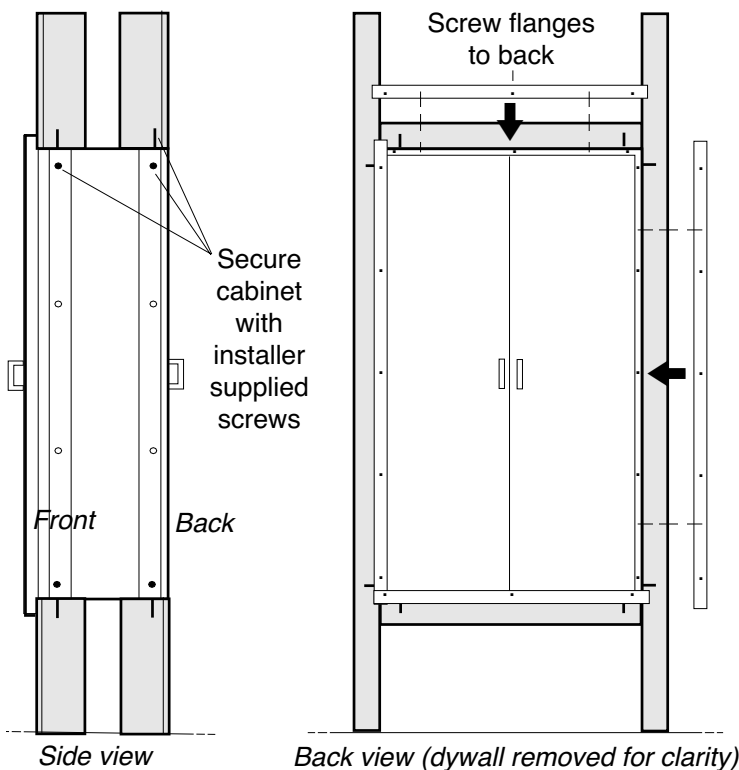
Manual No. 338 Revised 1/13

1. Cut wall opening and place cabinet:

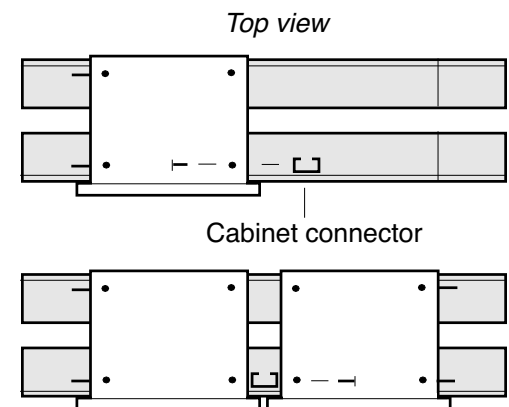


1. Check local codes. Seismic calculations available.
2. 1/4" Mounting holes provided. Mounting screws not supplied. Use screws suitable for wall material. All other screws, nuts provided.
3. Wall opening width is the front width of the cabinet(s), less 1 1/2".
4. Wall opening height is cabinet front height less 1 1/2".
5. Wall opening depth is cabinet side less 3/4".
6. Cut wall opening. Frame with stud material. Make sure cabinet mounting holes align with studs as shown. Check opening is square.
7. Slide cabinet into wall. Do not lift by door handles.
8. Install mounting screws into provided holes. Do not over torque and damage cabinet. Hand torque only.
9. If multiple cabinet installation, attach cabinet connector. Slide additional cabinet(s) into wall and secure screws to cabinet connector and mounting holes.
10. Check cabinet(s) are installed square to insure proper door movement. Shim as needed.

2. Secure cabinet to wall, attach flanges:



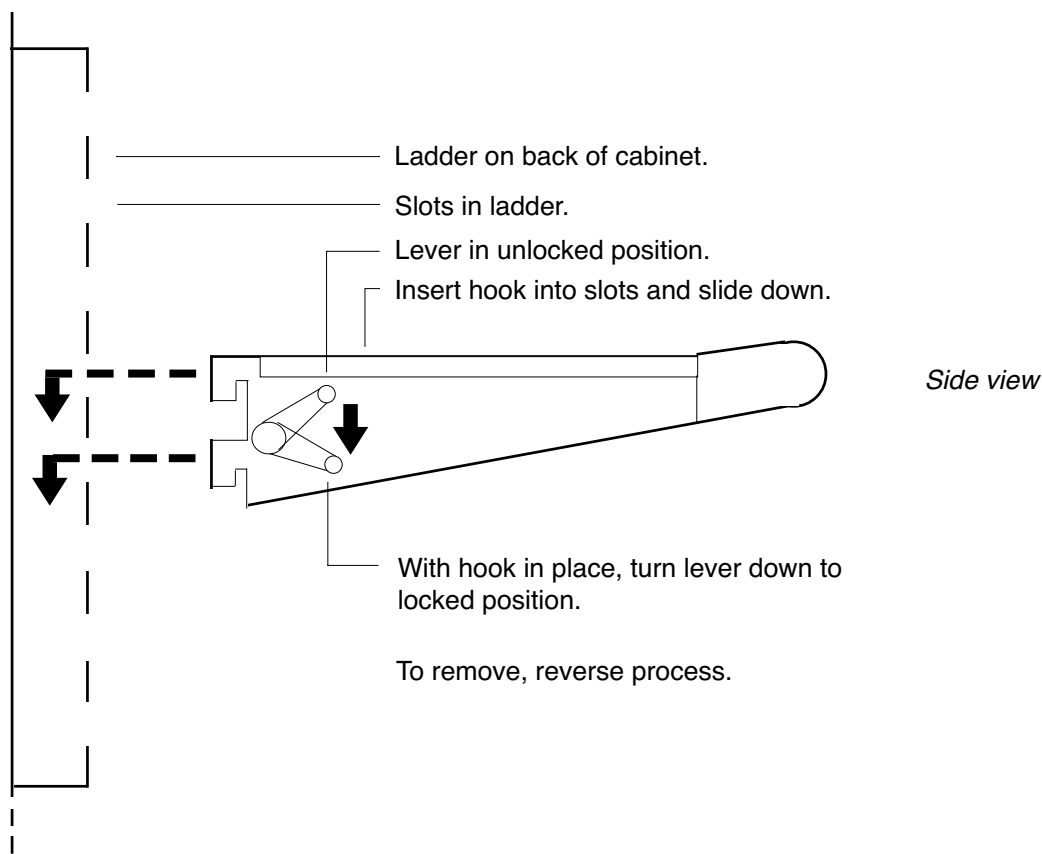
For multiple cabinet installation:



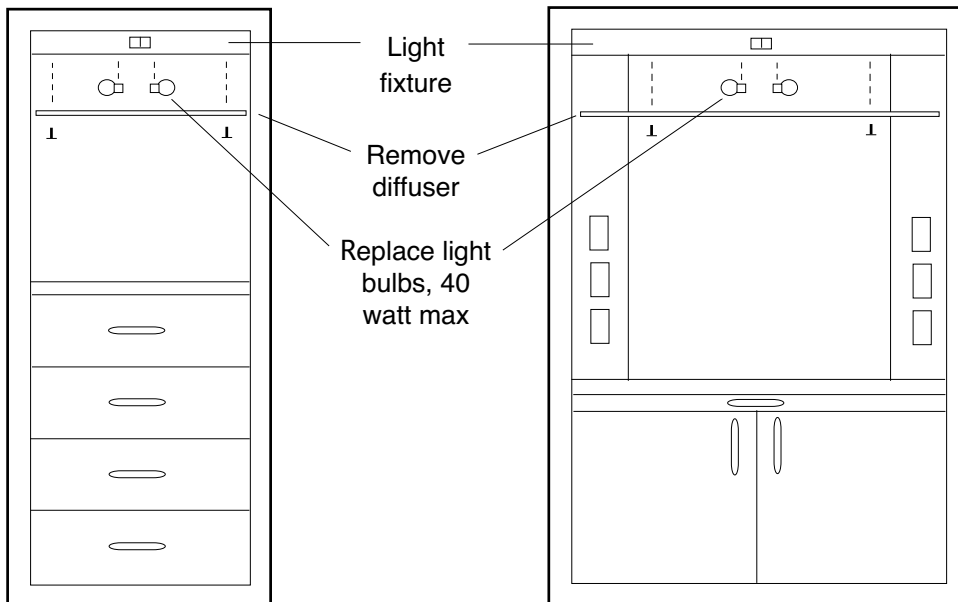
Carr Surgical Cabinets - Operation And Maintenance

Manual No. 338 Revised 1/13

Placing / removing hooks on STC cabinets:



Replacing light bulbs:



SDC24 Front view

NCC36, NCC48 Front view

Cleaning:

Clean with a soft cloth dampened with isopropyl alcohol. If using other cleaners, use caution and test first. Some can damage or cause corrosion to the cabinet and its components. Do not expose cabinet to an excess of any liquid. Thoroughly dry cabinet with soft dry cloth. Rub all cloths in direction of grain, not in a circular motion to preserve finish.