

# W Line Illuminators



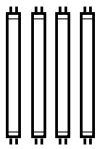
*Our Most Popular Configuration, Precision Engineered, Lifetime Guaranteed Film Grip*

- Bulbs: Four 15 watt bulbs per section.
- Housing: Thinline 3.75" thickness.
- Mounting: Surface or recess.
- Trim: Stainless steel.
- Features: Lifetime guaranteed adjustable tension roller film grip. Even illumination pattern. Lens removal without tools. Convection cooling system. Removable partitions. Welded construction, white powder coated. Any length made with a continuous lens. Large, easy to use rocker switches. Trigger / rapid start ballasts.
- Optional: Low leakage ballasts. Master switches. Tilted lower tiers. Film activation. Dimmers. Cords.

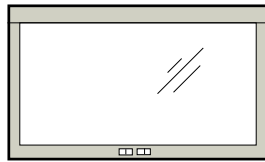
# W Line

## General

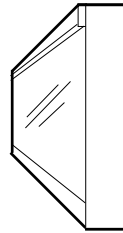
The Carr W line incorporates all the most popular configuration choices in one illuminator line. It meets all applicable standards including ACR, MIL Spec and UL. The very thin profile protrudes only 3.75" and can be recessed into the most narrow walls. To prevent inadequate light diffusion in such a thin housing, each section is equipped with no less than four 15 watt fluorescent bulbs. Featured is the patented adjustable roller film grip that carries a lifetime guarantee to hold film properly. It easily adjusts more or less firm for a smooth, positive hold. No more film dropping out because of worn or out of tolerance grips. Options include cords, film activation, master switches, dimmers, tilted lower tiers, low leakage ballasts. See Illuminator Accessories sheet for details.



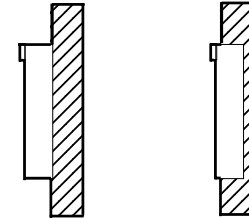
Four 15 watt  
bulbs per section



Stainless  
steel trim

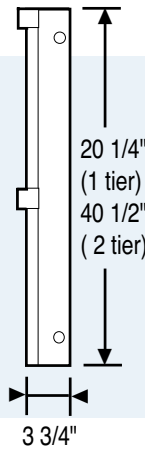
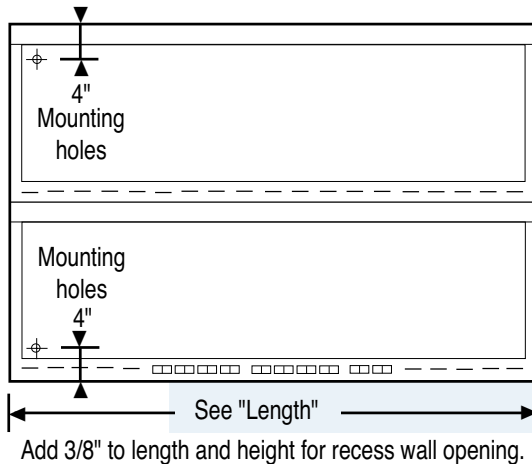


3.75" Thinline  
housing



Surface or recess  
mounted

## Measurements, Models Numbers



Sections	Length	Surface Model	Recess Model	Weight (Lbs.)
1	16 1/8"	1WS	1WR	23
2	30 1/4"	2WS	2WR	46
3	44 3/8"	3WS	3WR	69
4	58 1/2"	4WS	4WR	92
5	72 5/8"	5WS	5WR	115
6	86 3/4"	6WS	6WR	138
7	100 7/8"	7WS	7WR	161
8	115"	8WS	8WR	184
1/1	16 1/8"	1/1WS	1/1WR	46
2/2	30 1/4"	2/2WS	2/2WR	92
3/3	44 3/8"	3/3WS	3/3WR	138
4/4	58 1/2"	4/4WS	4/4WR	184
5/5	72 5/8"	5/5WS	5/5WR	230
6/6	86 3/4"	6/6WS	6/6WR	276
7/7	100 7/8"	7/7WS	7/7WR	322
8/8	115"	8/8WS	8/8WR	368
9/9	129 1/8"	9/9WS	9/9WR	414
10/10	143 1/4"	10/10WS	10/10WR	460

Suggested Mounting Heights (From bottom of illuminator to floor.)

1 Tier illuminators:

Viewed from sitting position: 36"

Viewed from standing position: 50"

2 Tier illuminators:

Viewed from sitting position: 31"

Viewed from standing position: 39"

## Suggested Specifications

"X-ray illuminators shall be as the W Line manufactured by Carr Corporation, Santa Monica, CA (800) 952 2398. Illuminators will have four 15 watt fluorescent bulbs per section, 3 3/4" housing depth and stainless steel trim. Units shall be constructed of electro-galvanized steel with all corners welded and ground smooth, white powder coated to a high gloss finish. Film grips shall be the adjustable tension nylon roller type with lifetime guarantee. Ballasts shall be trigger / rapid start. Lens shall be easily removable for changing bulbs without the removal of any trim or screws. Illuminators shall be Underwriters Labs (UL) approved."

